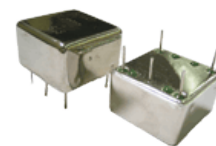


- Frequency Range 10.0MHz to 100.0MHz
- 36.2 x 27.7 x 16.0mm 5 pin metal, solder-sealed package
- Supply Voltage 5.0 Volts
- AT-Cut Crystal
- Sine Wave Output
- EFC (Voltage control) as standard



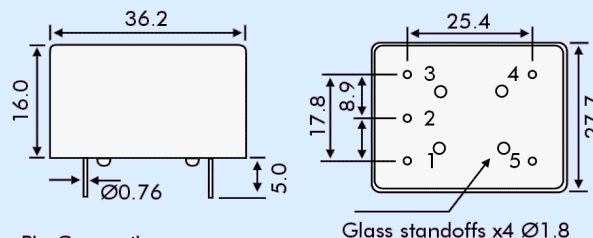
### DESCRIPTION

OC30E5A series oven-controlled crystal oscillators are close tolerance OCXOs with good phase noise performance.

### SPECIFICATION

Crystal Cut:	AT-cut
Output Waveform:	Sine Wave
Supply Voltage:	+5.0 VDC $\pm$ 0.2V
Frequency Range:	1.25MHz to 100.0MHz
Initial Calibration Tolerance:	$\pm$ 0.5ppm max. (at $V_{CON} + 2.5V$ )
Frequency Stability	
over 0° to +60°C:	$\pm$ 0.03ppm
over -20° to +70°C:	$\pm$ 0.08ppm
over -40° to +85°C:	$\pm$ 0.2ppm
vs. Voltage Change:	$< \pm$ 20ppb for $\pm$ 5% change
vs. Ageing:	$\pm$ 5.0ppb max per day $\pm$ 0.5ppm per first year $\pm$ 3.0ppm over 10 years
vs. Load Change:	$< \pm$ 20ppb for $\pm$ 5% change

### OUTLINE & DIMENSIONS



- Pin Connections
1. Voltage Control EFC
  2. Ground/case
  3. RF Output
  4. Reference Voltage Output
  5. Supply Voltage

Glass standoffs x4  $\varnothing$ 1.8

Warm-up Time: 3 minutes max. to within  $\pm$ 0.5ppm of nominal freq.

### Voltage Control

Control Voltage Centre:	+2.5 Volts ( $V_{CON}$ )
Freq. Deviation Range:	$\pm$ 5.0ppm min., $\pm$ 20ppm max. ref. to 25°C and O.T.R.
Control Voltage Range:	2.5V $\pm$ 2.0Volts
Transfer Function:	Positive: Increasing control voltage increases output frequency
Input Impedance:	100k $\Omega$ minimum
EFC Linearity:	$\pm$ 10% maximum

Power Dissipation: 1.2W max. steady state  
3.5W max. at turn on

### Output

Output Level:	+3dBm typ., +8dBm max. into 50 $\Omega$ load
Harmonics:	-30dBc min.
Spurious:	-75dBc min.

Reference Voltage: +4.0 $\pm$ 0.3VDC or custom

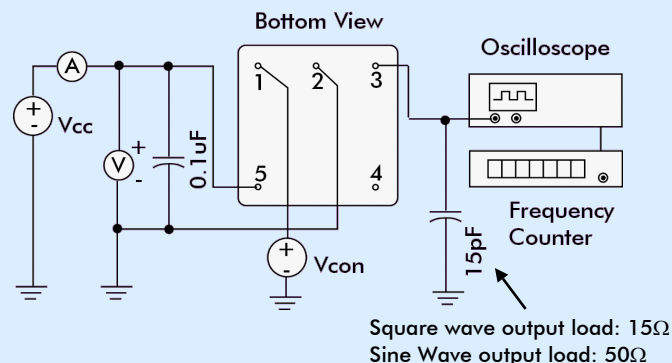
### Environmental

Storage Temperature:	-55° to +125°C
Shock:	2000g, 0.3ms $\frac{1}{2}$ sine
Vibration:	10 ~2000Hz / 10g

### PHASE NOISE (at 10MHz)

Offset	dBc/Hz
1Hz	-75
10Hz	-100
100Hz	-130
1kHz	-140
10kHz	-150

### TEST CIRCUIT



### PART NUMBER FORMAT

Example: **OC30GE5A-10.000-0.08/-20+70**

OCXO Package: OC30  
 RoHS Compliance  
     G: RoHS Compliant  
     Blank: Non-compliant  
 E: Output Sine Wave  
 5: Supply Voltage 5.0Volts  
 A: AT-Cut Crystal  
 Nominal Frequency 10.0MHz  
 Stability in  $\pm$ ppm  
 Operating Temperature Range °C  
     Lowest Temperature/Highest Temperature