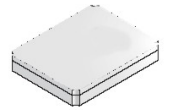


FEATURES

- Designed for infrared, vapour phase or epoxy mounting
- Low profile, (<0.59mm) hermetically sealed ceramic package
- Excellent ageing characteristics
- High shock and vibration resistance
- Full military testing available
- Available with glass or ceramic lid



DESCRIPTION

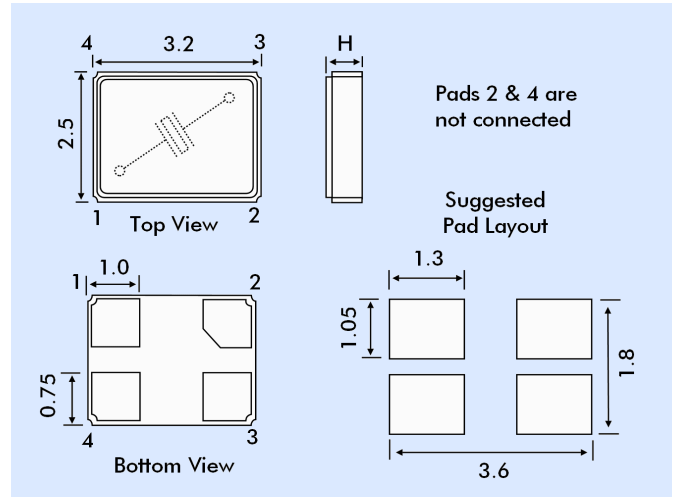
CX14SM crystals are designed for applications requiring very small footprint and low profile (<0.59mm). Using micro-machining processes this hermetically-sealed crystal ensures high stability and low ageing.

SPECIFICATION

Specifications stated are typical at 25°C unless otherwise indicated. Specifications may change without notice.

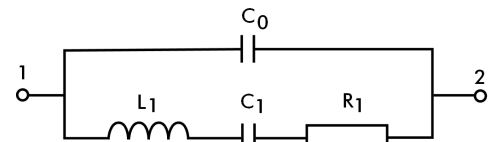
Fundamental Frequency:	26.0MHz	50.0MHz
Motional Resistance R (Ω):	20	25
Motional Capacitance C1 (fF):	3.5	3.0
Quality Factor Q (k):	80	40
Shunt Capacitance C0 (pF):	1.0	1.5

OUTLINE & DIMENSIONS



Dim. H	Glass Lid	Ceramic Lid	Thin Glass Lid
SM1	0.63	0.59	0.52
SM2	0.65	0.61	0.54
SM3	0.67	0.63	0.56
SM4	0.65	0.61	0.54
SM5	0.67	0.63	0.56

CRYSTAL EQUIVALENT CIRCUIT



R1 Motional Resistance L1 Motional Inductance
C1 Motional Capacitance C0 Shunt Capacitance

PACKAGING OPTIONS

CX14SM AT crystals are available either tray packed (<250pcs) or tape and reel (>250 pieces).
12mm tape, 178mm or 330mm reels (EIA 418).

HOW TO ORDER CX14SM AT CRYSTALS

CX14 - S - C - SM1 - 26.0M, 100 / 100 / - / I

'S' if special, custom design. Otherwise leave blank

Blank = glass lid
C = ceramic lid

Terminations
SM1 = Gold plated *
SM2 = Solder plated
SM3 = Solder dipped
SM4 = Solder plated *
SM5 = Solder dipped *
* = Lead free

Frequency
M = MHz

Calibration Tolerance @25°C (in ppm)*

Frequency Stability over Temp. Range (in ppm)*

Temp. Range
C = -10° ~ +70°C
I = -40° ~ +85°C
M = -55° ~ +125°C
S = Customer specified

*Alternative 'total' tolerance (in ppm)